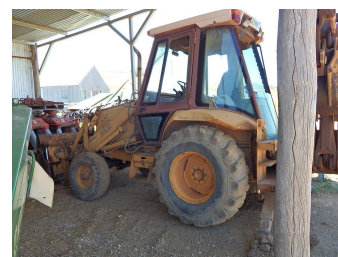


# CLEARING SALE

Sun Apr 20 2025



## CLEARING SALE

**MAJOR PLANT & MACHINERY REDUCTION SALE SATURDAY 10TH MARCH 2018 - 10:30AM**

**INSPECTION: 10am-4pm Friday 9th March, 2018**

LOCATION	Approx. 6 km N/E of Manilla via the Namoi River Road, follow signs.
REMARKS	<p>TRACTORS: Deutz Agrotion TTV 630 (220hp) 2011, 2200hrs, Trima +7.3p FEL with 2in 1 bucket; Deutz Agrotion TTV 630 (220hp) 2012, 2750hrs, Front 3pl &amp; PTO; Deutz Agrotion M615 (143hp) 2011, 3100hrs, Trima +5.1p FEL with bucket &amp; pallet forks; New Holland T7.270 (270hp) 2015, 1500hrs, Front 3pl &amp; PTO.</p> <p>EARTHMOVING: Case 580K Backhoe, 3in 1 bucket &amp; forks; Pacific Compac 1450 smooth drum vibrating roller.</p> <p>HAYMAKING: Krone Big Pac 1290XC (2016) square baler(8'x4'x3'); Krone Big Pac 890 (2011) square baler(8'x3'x3'); Massey Ferguson 1839 (2013) small square baler; Krone Swadro 800/26 (2011) hay rake; Krone Swadro TC 760 (2015) hay rake; Krone Swadro 46T (2012) hay rake; Krone 3200 CRi (2016) Easycut Trailed Disc Mower; Krone 3210-CRi Easycut Trailed Disc Mower (2016); Krone 32-CRi Front Mounted Easycut Disc Mower (2012)</p> <p>PLANT &amp; EQUIPMENT: Landpride Commander RC5615, 4.7m Folding Wing Slasher; Case IH 770 offset disc plough, 56 plate; Croplands 28m, 1200ltr, 3pl, Boom Spray; Howard HR61 Rotavator, 3pl; Howard 3pl Rotary Hoe; 8 Row Gessner Lilliston; International 511 combine, SSB, 24 run with covering harrows; 6mtr Pasture Roller; Horwood Bagshaw 23 tyne folding wing chisel plough; 10' Curly tyne frame; Alloway 4 Row Swail; Carry All with channel boom spray; Jarret 6' slasher; 3pl Berends single tyne ripper; Case 3pl quick hitch; Case 8950 tyres &amp;</p>

# CLEARING SALE

Sun Apr 20 2025

rims; Case 2555 cotton picker fronts x 8, baskets x 2; 40' x 8" Grain Auger with Kohler motor; 2 x Single axle 18' Farm trailers.

IRRIGATION: 10 Centrifugal Pumps, new and used (200x250mm, 100x125mm, 120x120mm, 60x100mm, 70x95mm); Quantity of Ajax and Pope 4" and 5" Risers; Wade Rain 270m, 5" Side Roll Irrigator; Irrigrain JP75-300 (3" x 300m) Hardhose Irrigator (new); Southern Cross 2" Travelling Irrigator; Qty of 4" & 5" Irrigation Pipes; Qty of Centrifugal Pumps (100mm-200mm) Pullies, Risers, Junctions, Reducers etc; Qty (100mm-150mm) Gal flange pipes & fittings; Qty misc. irrigation fittings; Skid pump frame; Electric 100hp, 3 phase motor.

VEHICLES & BOATS: Leyland bogey axle truck, 8 mtr beaver tail tray, V8 Perkins, R/R, unreg; Nissan Navara farm ute, unreg; Suzuki Stockman farm ute, unreg; Can-am Outlander SST G2 quad bike; Yamaha 200 Ag bike; Box Trailer, 8' x 5' with sheep crate; Wellcraft Excel 19SX bow rider, 4.3ltr (220hp) Mercruiser motor, on easy load trailer; Inflatable tender, forward control with 30hp Evinrude motor on trailer.

LIVESTOCK & FENCING: Prattley 3-way swing gate AutoDraft with scales (unused); Lyco Dominator Wool Press, 3phase; Steel wool table; Buzacott Rotating Power Spray Sheep Dip; 4 x 2ton- AMW Sheep feeders; 3 x 4ton-AMW Sheep feeders; 2 x ELMS Sheep feeders; 3 x 5ton- HE circular Cattle feeders; Hay rack; 10x5m Qty concrete stock troughs; 3 large stock stock troughs; Large qty of steel posts, hingjoint & barb wire; 30+ 12' gates; Qty of vet supplies etc; 2 wire spinners; Electric fence energisers & supplies.

WORKSHOP & SUNDRIES: Agrison GFS 15 kva 3 phase generator, 2000hrs; 10ft x 28ft Windmill; Qty gal steel web trusses; Qty of engines & parts; Building materials; Whitegoods; Split system air conditions; Qty cotton tarps; Compac air compressor; Antique Sunshine header; sickle bar mower; Stick rake; 12 x Cedar Doors; etc.

INSPECTION 10am-4pm Friday 9th March, 2018

TERMS Strictly cash or approved cheque on the day of the sale, Buyer registration with ID required. Number system applies, GST applies, No card/Eftpos facility.

DIRECTIONS Approx. 6 km N/E of Manilla via the Namoi River Road, follow signs. VISIT

www.collierpropertysales.com.au

VENDORS REPRESENTATIVE Greg Vallender - 0428 445 219

AGENT John Collier - 0428 667 796

Graham Evans 0419 43 3505