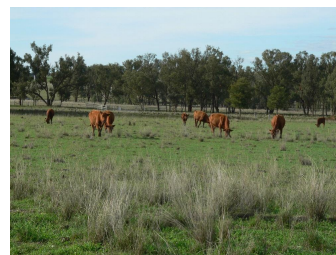


"Hawk Loch" Subdivision

Thu May 2 2024



✚ 10HA (25 Acres)

SOLD**Hard to find quality 25 acre Lot with a bore and ideal building site.**

AREA	10HA (25 Acres) each
LOCATION	Well located just 12km from Tamworth Post Office in the favoured Warral area.
COUNTRY	Gently undulating and arable with Box and Gum trees for shade and shelter. Productive lot suited to grazing and cropping.
WATER	Established licences bore.
FENCING	Boundaries securely fenced with hinge joint and barbed wire. Post and rail entrance with double gates.
REMARKS	Hard to find quality 25 acre Lot with a bore and ideal building sites.